

Double conversion online UPS technology



Product features

Green power :

- 3 level technology for input power factor up to 0.996, Low THDI (<5%), decrease the pollution to city power
- AC/AC efficiency up to 95% , energy saving and low carbon emission
- Compliance with RoHS standard , innocuous and environmental friendly
- Design in accordance to International EMC and Safety Standard

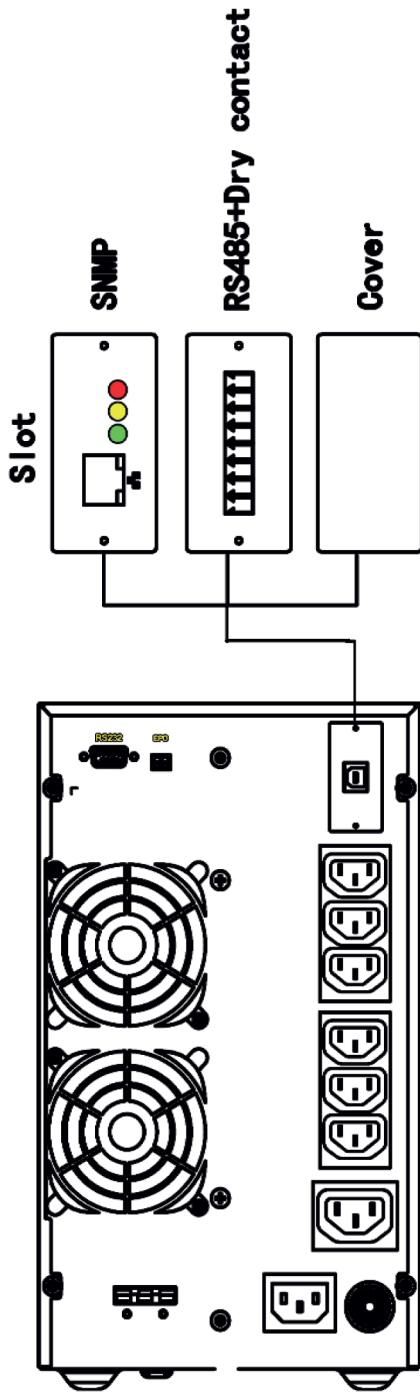
Excellent Flexibility :

- Output voltage and ECO mode are selectable via LCD
- 1~8A charging current settable via software (6-10k)
- Maintenance bypass for 6-10KVA
- Battery disconnection alarm
- SNMP or RS485 +dry contact z (option)
- Charging voltage temperature compensation (option)

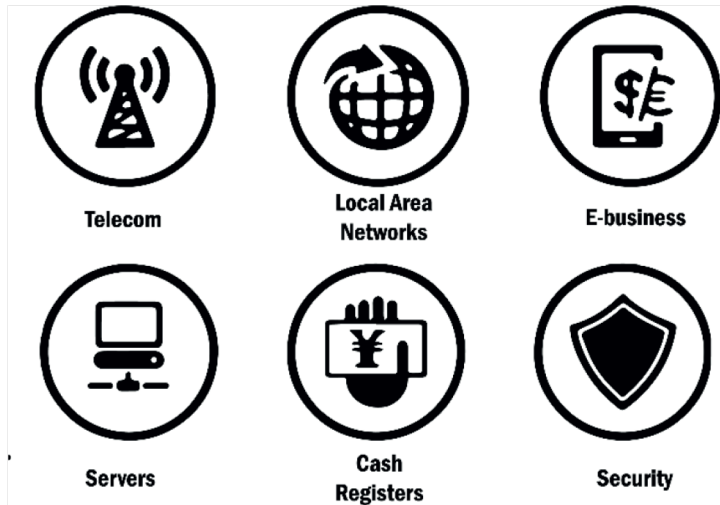
Out standing profitability :

- Minimum 0.05m footprint, Less space required for installation
- Get at least 10% more output power for your loads
- Up to 95% efficiency

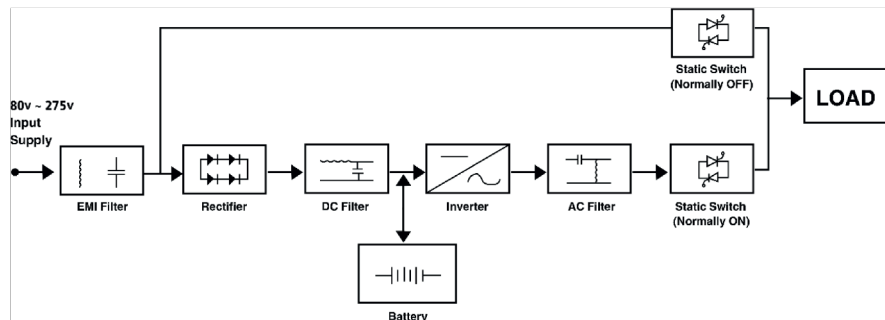




Typical application



Function diagram



Product technical specification

	MODEL	NW1000	NW2000	NW3000	NW6000	NW10000	
INPUT	<i>Voltage (Vac)</i>	120-295			80-275		
	<i>Frequency (HZ)</i>	50/60 ±1%(50/60Hz auto sensing)					
	<i>Power factor</i>	≥0.99					
	<i>THDI</i>	<%5					
OUTPUT	<i>Capacity (VA)</i>	1000	2000	3000	6000	10000	
	<i>AC/AC Efficiency(max)</i>	92%	93%	94%	95%	95%	
	<i>Power factor</i>	0.9 (1.0 optional)					
	<i>Voltage(Vac)</i>	208/220/230/240 ±1 (selectable on display panel)					
	<i>Frequency(HZ)</i>	50/ 60 ±0.2 (battery mode)					
	<i>TVHDv</i>	THD < 2% (linear load); THD < 5% (nonlinear load)			THD < 1% (linear load); THD < 4% (nonlinear load)		
	<i>Transfer Time</i>	0					
BATTERY	<i>Voltage (VDC)</i>	24	48	72	192	192	
	<i>BATT Type</i>	2x9Ah 12V	4x9Ah 12V	6x9Ah 12V	16x7Ah 12V	16x9Ah 12V	
	<i>Charger Currunt (A) Max.</i>	1 (Standard)			1~8 (adjustable)		
OTHER	<i>Communication Interface</i>	RS232, EPO, USB (slot) (SNMP,RS485 + dry contact are optional in slot)					
	<i>LCD Display</i>	AC input & output voltage, frequency ,Load Level, Battery level ,Temperature AC Mode , Battery mode, Bypass mode and Fault					
	<i>Alarm</i>	Low Battery , abnormal AC input, UPC failure , etc.					
	<i>Protection</i>	Low battery, overload , short-circuit and over temperature ,etc.					
	<i>Noise (dB)</i>	<50	<55				
	<i>Working Temperature (°C)</i>	-5 ~ 40					
	<i>Relative Humidity</i>	0 ~ 95%, No condensation					
	<i>Dimension (WxDxH) mm</i>	145x360x225	190x400x330		230x502x553		
<i>Weight (Standard)(kg)</i>	9.2 or 11.6	17.7 or 22.4	22.9 or 27.6	54.5	56.2		

